



- 1 M8, M10 & M12 bolts available as alternatives**
– depending on clamping force requirements
- 2 Clamp band in one piece**
– contact surface meets pipe consistently
– even contact pressure over the entire pipe circumference
– excellent sealing properties
- 3 Single-bolt closure**
– easy installation
- 4 Rounded band edges**
– pipe protection
– prevents risk of injuries

Exhaust pipe clamps

ARS exhaust pipe clamps provide a secure, reliable connection for pipes that are fitted into one another, even those that are subject to significant temperature fluctuations. As such, they are particularly suitable for connecting exhaust pipes and silencers in the automotive industry.



Advantages at a glance

- One piece
- Contact surface meets pipe consistently
- Even contact pressure over entire pipe circumference
- No risk of asymmetrical pipe deformation

Applications

- Agricultural machines
- Building machines
- Engine manufacturing

Materials

W1	W2	W3	W4	W5
x	x*		x*	x*

* On request.

Material	Corrosion resistance in salt spray testing
W1	Min. 144 h

Bolts

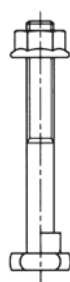
Bolt	Hammer head bolt/Flange nut	Hexagon-head bolt/Flange nut	Hexagon-head bolt/Hexagon	Loose washer *
M8	X	X		X **
M10			X	X
M12			X	X

* Under bolt head and under bolt nut.

** Under bolt head (select nominal diameters only).



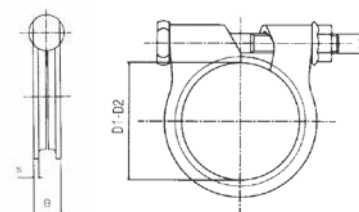
M8 version with hammer head bolt.



M10 and M12 version with hexagon-head bolt.



Technical data & Ordering information



NORMACONNECT® ARS

Designation	Clamping ranges D1-D2 in mm	S	B	Recommended tightening torque	W1 Product No.	
ARS-M8-27	24-27	1.5	10.4	8-10 Nm	0151 8939 027	
ARS-M8-33	30-33	1.5	10.4		0151 8939 033	
ARS-M8-36	33-36	2.0	12.8	10-15 Nm	0151 8940 036	
ARS-M8-39.5	36.5-39.5	2.0	12.0		0151 8940 040	
ARS-M8-42	39-42	2.0	12.8		0151 8940 042	
ARS-M8-45	42-45	2.5	13.6		0151 8941 045	
ARS-M8-46	43-46	2.5	12.8	15-20 Nm	0151 8941 046	
ARS-M8-47	44-47	2.5	13.6		0151 8941 047	
ARS-M8-48	45-49	2.5	13.2		0151 8941 048	
ARS-M8-49	48-51	2.5	13.2		0151 8941 049	
ARS-M8-50.5	51-54	2.5	13.2		0151 8941 505	
ARS-M8-51	52-55	2.5	13.2		0151 8941 051	
ARS-M8-54	55-58	2.5	13.2		0151 8941 054	
ARS-M8-55	55-58	2.5	13.6		0151 8941 055	
ARS-M8-58	61-64	2.5	13.2		0151 8941 058	
ARS-M8-64	63-66	2.5	13.2		0151 8941 064	
ARS-M8-71	68-71	2.5	13.2		35-40 Nm	0151 8941 071
ARS-M10-71	67-71.5	3.0	13.2			0161 8939 071
ARS-M12-114	106-114	3.0	19.0	0181 8079 114		
ARS-M12-145	137.5-144.5	3.0	19.0	0181 8941 145		